

*You are the light of the world. A city on a hill cannot be hidden. Neither do people light a lamp and put it under a bowl. Instead they put it on its stand, and it gives light to everyone in the house. In the same way, let your light shine before men, that they may see your good deeds and praise your Father in heaven.*

*Matthew 5:14-16 NIV*

## Congratulations

to the Bethany Indiana Class of 2007!

Be sure to visit the Bethany Indiana website to read more about each graduate!  
[www.bethany.org/indiana](http://www.bethany.org/indiana)



**Zachary David Adams**  
Korea  
University High School



**James Keith Wai-Hing Allen**  
Hong Kong  
Muncie Central High School



**Elizabeth Thao Ball**  
Vietnam  
North Central High School



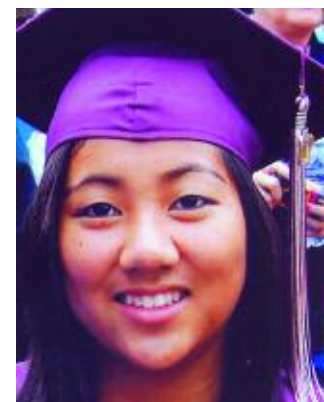
**Alexander Jacob-Jung "AJ" Apple**  
Korea  
Springs Valley High School



**Matthew Scott Clifton**  
U.S.A.  
Norman North High School



**Steven Wade Baertschi**  
U.S.A.  
Carmel High School



**Anna Corinne Joo Coffey**  
Korea  
Indiana Academy and  
New Prairie High School



**Chelsea Alise Culver**  
Korea  
Goshen High School



**Kimberly MeeRa Oshita**  
Korea  
Sycamore High School



**Ganon Mathew Ritchie**  
Korea  
Tri-West Hendricks  
High School



**Tyanne Renee Jensen**  
Korea  
Franklin Central Hig School



**Matthew Piker**  
Korea  
University of Illinois Urbana-  
Champaign



**Benjamin Schlesselman**  
Korea  
Iowa State University



**Ann Yung Kemper**  
Korea  
Forest Park High School



**Colleen Elizabeth Price**  
Korea  
North Central High School



**Tyler Storch**  
Korea  
Franklin County High  
School



**Amanda Renee Morrow**  
Korea  
New Castle Chrysler  
High School



**Molly Lynn-Sang Quanty**  
Korea  
Central High School



**Kaitlin Faye-Lou Williams**  
Korea  
Broken Arrow High School

Linda Wrestler, Director  
5650 Caito Drive  
Indianapolis, IN 46226  
317.568.1000  
Fax: 317.541.4646  
[www.bethany.org/indiana](http://www.bethany.org/indiana)  
1.800.BETHANY

